

PICK AND CARRY

Handling and riding with loads
without the need for footing

up to
995 Kg

Danfoss Hydraulics

Max. Hydraulic flow rate 20 l/min
Max. Hydraulic pressure 180 bar
Proportional distributor
Piston hydraulic generator
Combination of functions



Kubota engine

18,5 kW
24,8 hp



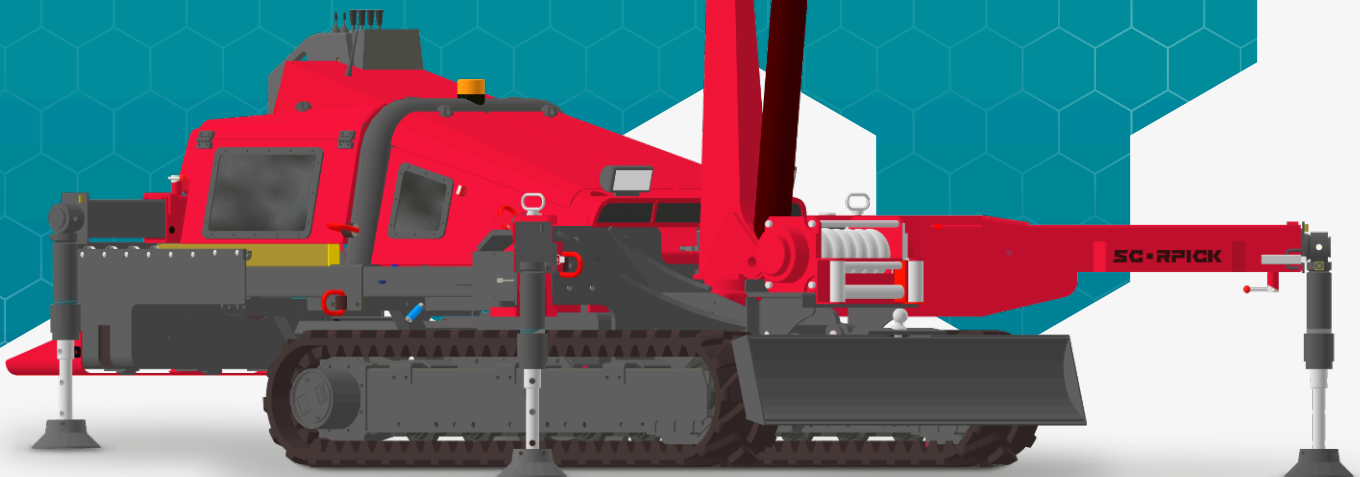
Main arm

Max. height 8,25 m
Max. weight 2 000 Kg
Radius 190 degrees



Remote control

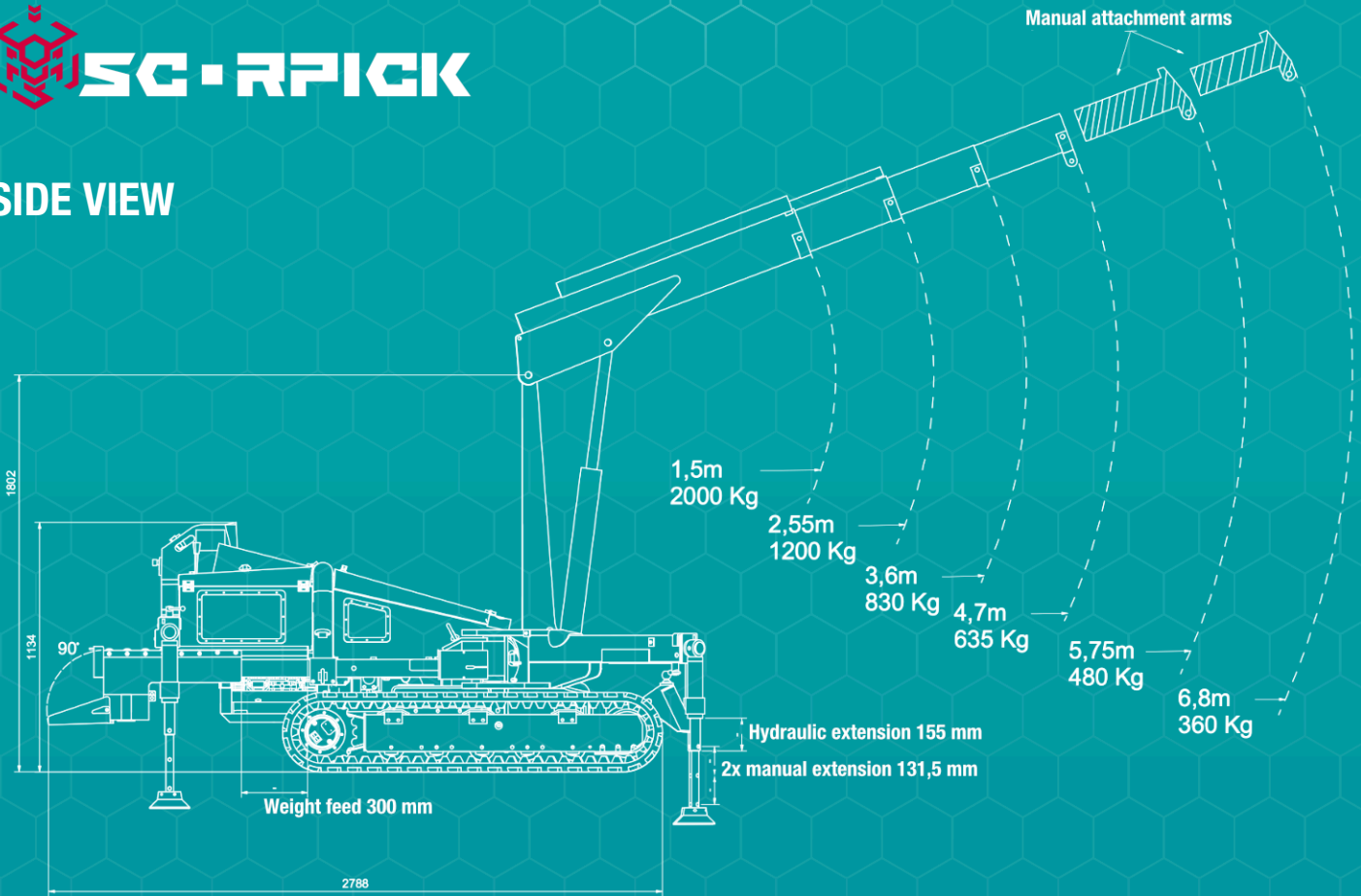
Multifunctional
Plowshare control
Track control
Crane control



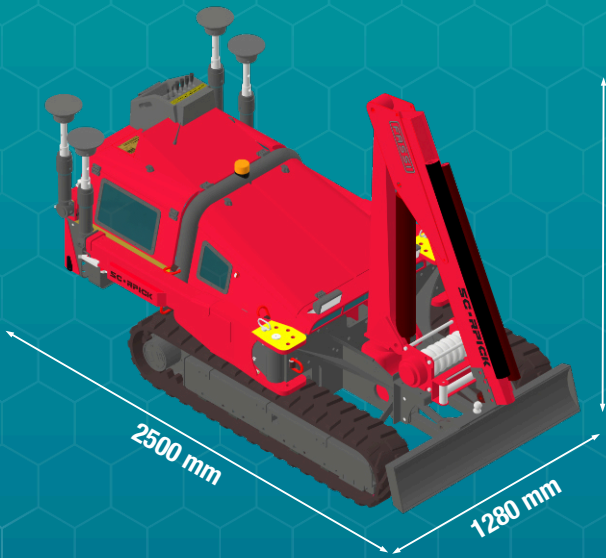
- ◆ Track pressure on the ground 0,36 Kg/cm²
- ◆ Variable adjustable feet
- ◆ Traction device for 3,5 t
- ◆ 4,5 t hydraulic winch
- ◆ Plowshare

- ◆ Electrically operated counterweight
- ◆ Warranty 12 months (24 months for HNJ construction)
- ◆ Machine weight 2050 Kg (depending on equipment)
- ◆ 26 years of experience
- ◆ Czech manufacture

SIDE VIEW



DIMENSIONS



TOP VIEW

